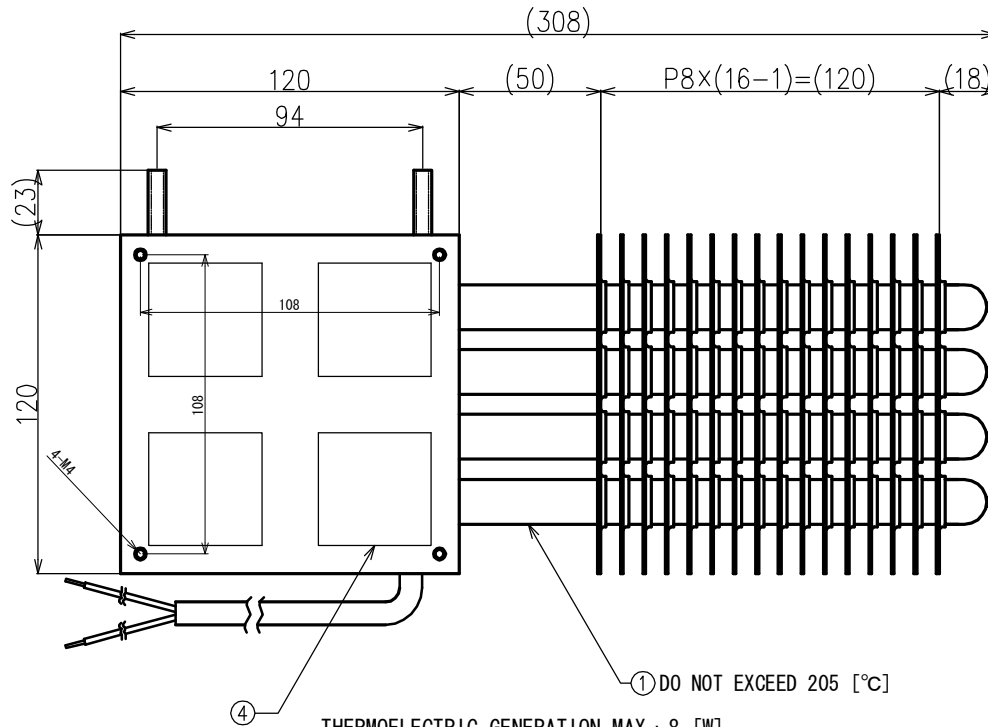
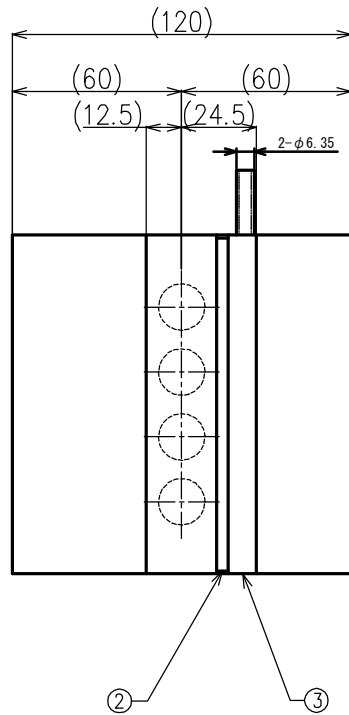


①	HOT SIDE (C1020) /HEAT SOURCE/HEAT PIPE
②	THERMAL INSULATING MATERIAL (VITON RUBBER)
③	COLD SIDE (C1020) /COLD SOURCE
④	SEEBECK DEVICE (Bi-Te)



1. Performance data on drawings, catalogs, handling manuals, and our documentation is reference only, and is not guaranteed.
2. This product is designed by us. Production and copy of this product without our permission is not permitted.

① DO NOT EXCEED 205 [°C]

④

THERMOELECTRIC GENERATION MAX : 8 [W]
 HOT SIDE/HEAT SOURCE [°C] : SEEBECK DEVICE SURFACE 205 [°C]
 DO NOT EXCEED 205 [°C]
 COLD SIDE/COLD SOURCE [°C] : SEEBECK DEVICE SURFACE 5 [°C]
 COLD SOURCE/RECOMMENDED FLOW RATE : 2~5 [L/min]
 (LIQUID : WATER, ETHANOL, ETHYLENE GLYCOL & WATER
 TEMP. RANGE : -50~5 [°C], BEYOND THIS RANGE DETERIORATES PERFORMANCE)
 WEIGHT : ABOUT 5 [kg]
 SCALE : NOT TO SCALE (NTS)
 UNIT : mm
 PROJECTION : THIRD ANGLE PROJECTION METHOD
 DIMENSIONAL TOLERANCE : ±0.5

TITLE	SEEBECK UNIT
USE FOR	(THERMOELECTRIC GENERATION MAX : 8 [W])
ITEM NUMBER	SU-20HP