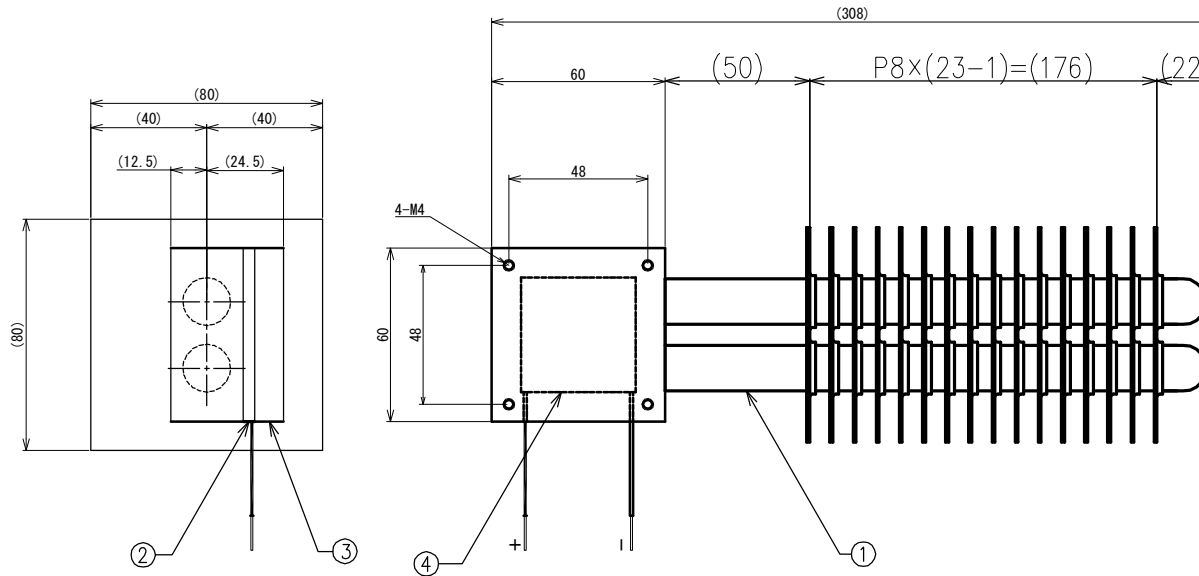


①	COLD SIDE (C1020) /COLD SOURCE
②	THERMAL INSULATING MATERIAL (VITON RUBBER)
③	HOT SIDE (C1020) /HEAT SOURCE/HEAT PIPE
④	SEEBECK DEVICE (Bi-Te)



THERMOELECTRIC GENERATION MAX : 2 [W]
 HOT SIDE/HEAT SOURCE [°C] : SEEBECK DEVICE SURFACE 205 [°C]
 DO NOT EXCEED 205 [°C]
 COLD SIDE/COLD SOURCE [°C] : SEEBECK DEVICE SURFACE 5 [°C]
 WEIGHT : ABOUT 2 [kg]
 SCALE : NOT TO SCALE (NTS)
 UNIT : mm
 PROJECTION : THIRD ANGLE PROJECTION METHOD
 DIMENSIONAL TOLERANCE : ±0.5

1. Performance data on drawings, catalogs, handling manuals, and our documentation is reference only, and is not guaranteed.
2. This product is designed by us. Production and copy of this product without our permission is not permitted.

DATE: 2013/12/01 (JAPAN)

TITLE	SEEBECK UNIT
USE FOR	(THERMOELECTRIC GENERATION MAX : 2 [W])
ITEM NUMBER	SU-05HP